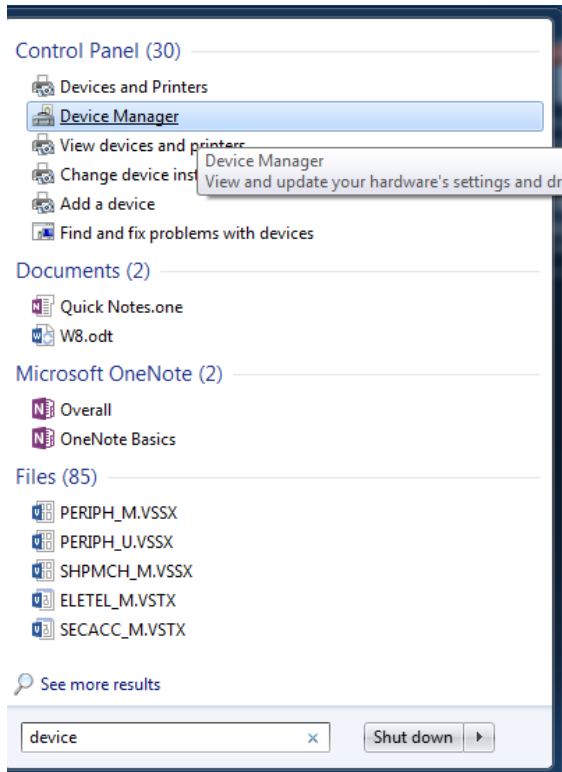


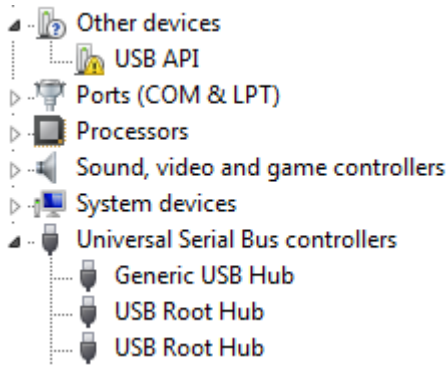
# How to install the SafeEar data logger driver manually

1. In your computer control panel select device manager.

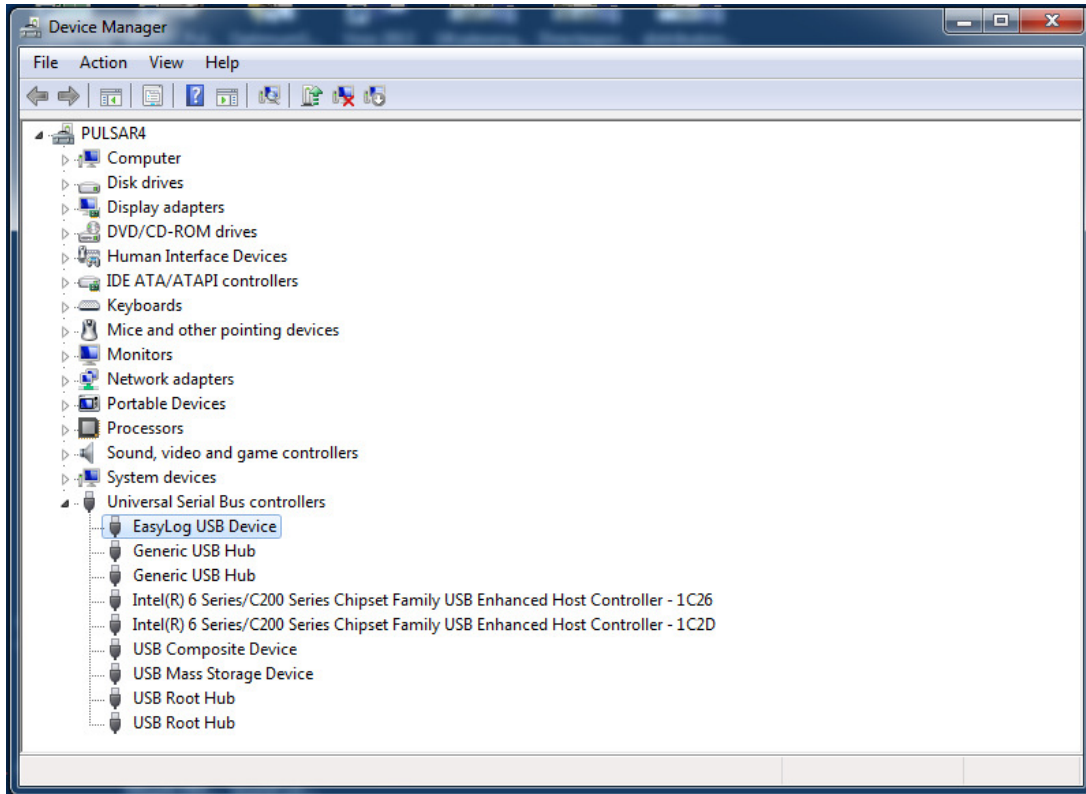


2. Click to expand 'other devices' and 'Universal Serial Bus' lists.

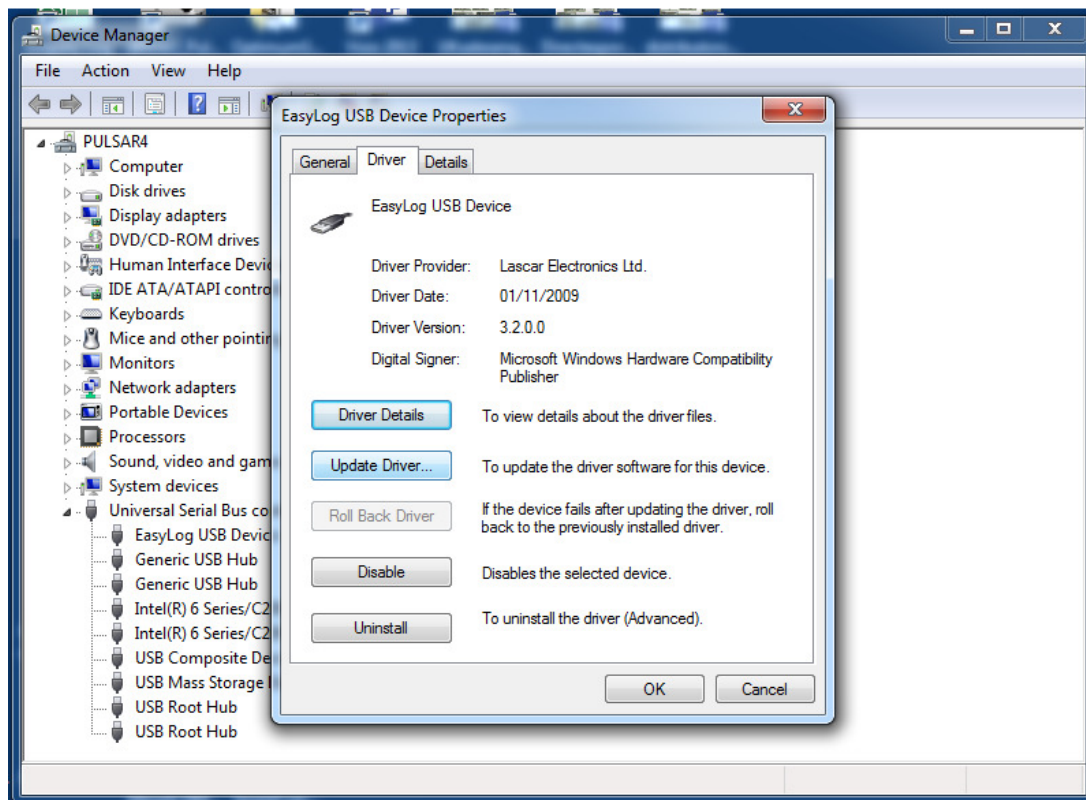
3. If you see an item with a yellow exclamation mark icon called either 'USB API' or USBExpress device' right click on that item and choose 'Update Driver.'



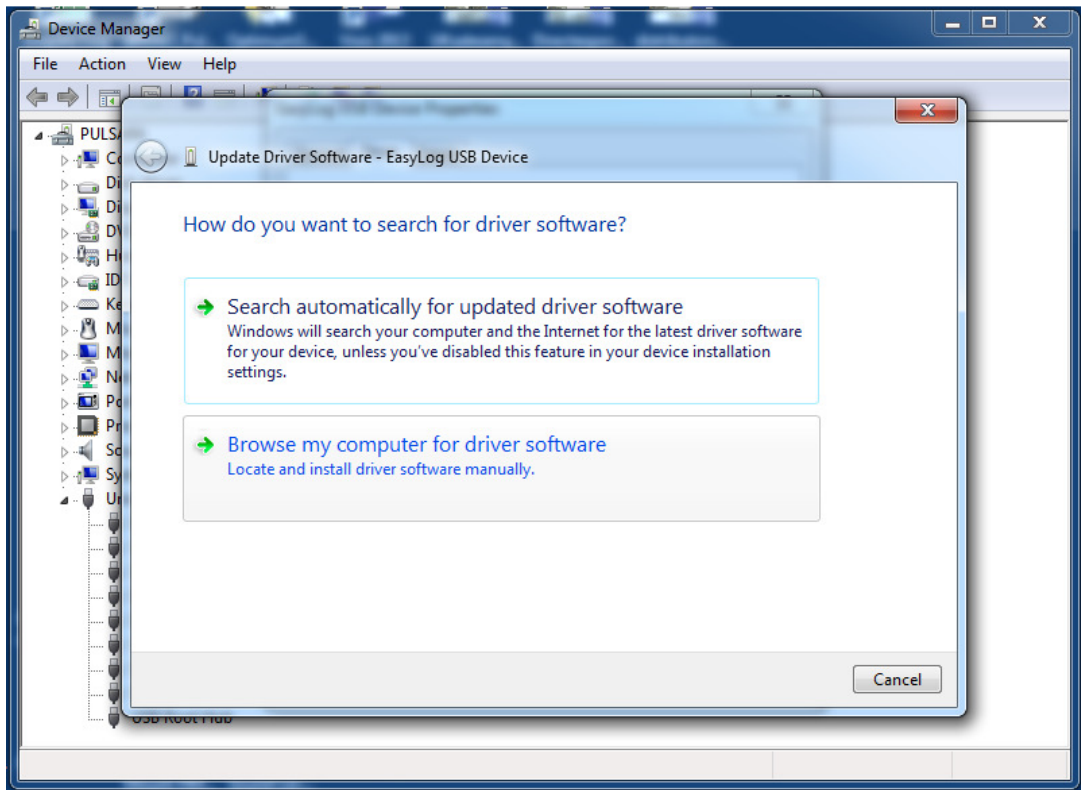
4. If there is no yellow exclamation please right click 'EasyLog USB device' under the Universal Bus list.



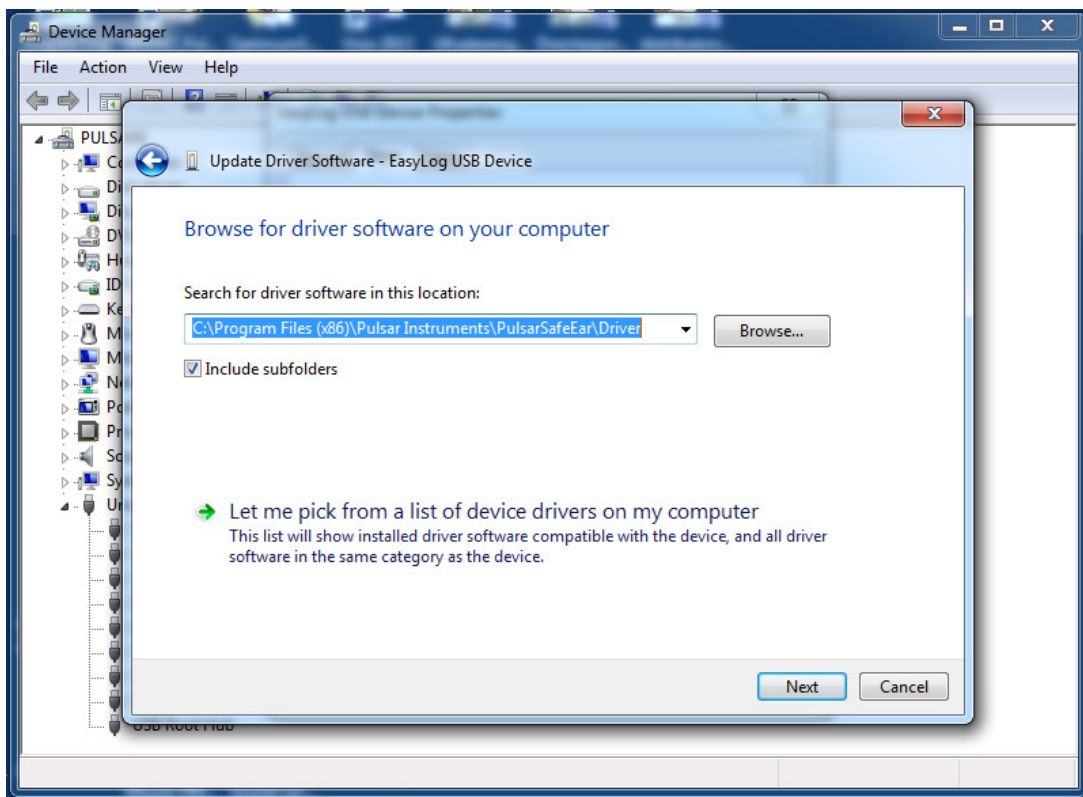
5. Right click on the item and choose 'Update Driver'.



6. Click 'browse my computer for driver software'



7. On the screen choose C:\program Files\Pulsar Instruments\PulsarSafeEar\Driver



8. Click 'Next' and windows will find and install the required driver.

9. The data logger is now ready for use. If you are unable to find this driver on your computer please insert the PulsarSafeEar software disc and select 'Let me pick from a list of device drivers on my computer'

10. Select and install PulsarSafeEar driver.