

TROLEX

XXD1+

**QUICK START
GUIDE**

Register your warranty online
at www.trolex.com/register

P5650.1602_Rev A

1. CHARGE

Connect your **XCD1+** to a USB wall charger or Mac or PC device to top up the battery.



Ensure your device is fully charged. The battery icon will flash green when charging is complete.



2. DOWNLOAD

Download the **BreathelITE** software onto your PC or laptop.



trolex.com/breathelite-download



OR...

Download **BreathelMOBILE** for free from the Apple or Google Play stores.



3. CUSTOMISE

Set your custom parameters in **BreatheLITE**, which will auto-identify each **XCD1+** connected.



4. MOUNT

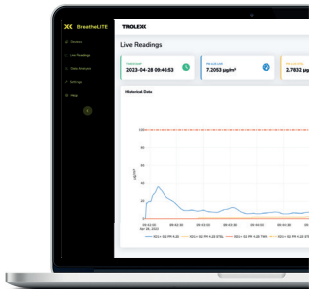
Attach your **XCD1+** using the alligator clip provided.



Mounting options available.

5. SAMPLE


You are now monitoring dust concentrations in your environment.



 STEL

 TWA

 Audio
alarms

 Vibration
alerts

6. ALERT

Record exposure data and receive automated real-time alerts when dust thresholds are breached.

7. REVIEW

Connect to **BreatheLITE** via USB to review, analyse and download device data.

Or view in real time using your **BreatheMOBILE** app.

